

# IPC – Chocolate Week 2

## Geography Task 1



Where does chocolate come from?

Use these websites to research the answer to this question.

[thestoryofchocolate.com](http://thestoryofchocolate.com)

[wildernessclassroom.com/students/archives/2006/03/chocolate\\_tree.html](http://wildernessclassroom.com/students/archives/2006/03/chocolate_tree.html)

<https://www.bbc.co.uk/bitesize/articles/zngsqp3>

<https://www.youtube.com/watch?v=LJ-1snuKJ7o>

**Once you have done your research write a paragraph on where chocolate comes from and try to answer these questions:**

Where do chocolate (cacao) trees grow?

Could we grow cacao trees in the school grounds or local area?

Could we grow them in England?

What climate/soil conditions are required for growth?

What countries do the cacao trees grow?

**Use the map to do the following:**

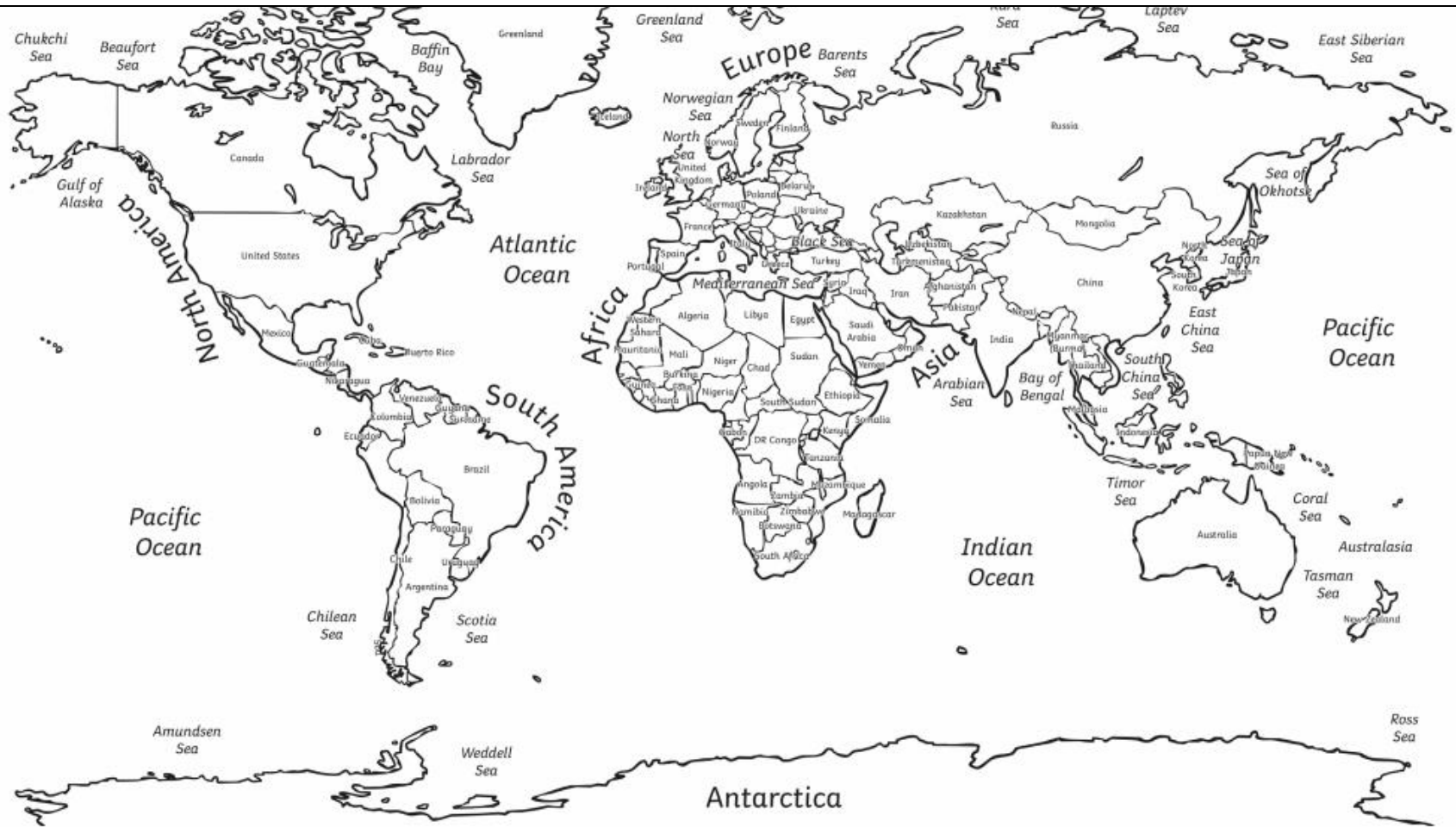
- Draw the **equator** on the map
- Colour in the countries where the cacao plant grows
- What do you notice about the location of these countries?
- Choose **one** of the countries and write a weather report for it.  
Use <https://www.bbc.co.uk/weather> to help

Weather Report for \_\_\_\_\_

---

---

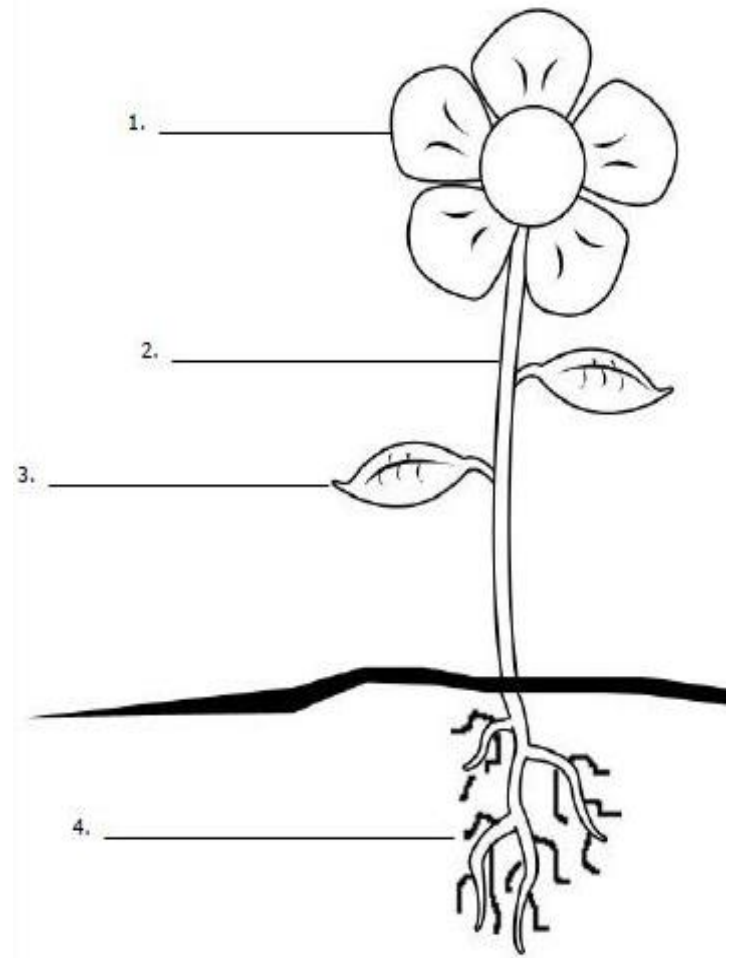
---



## Science Task 1

Can you label the parts of this plant?

<https://www.youtube.com/watch?v=CqYe6kN7jrQ>



Watch this clip:

<https://www.bbc.co.uk/teach/class-clips-video/science-ks1-ks2-ivys-plant-workshop-what-do-plants-need-to-survive/zkw2gwx>

Write a paragraph on what plants need to grow:

<hr/> <hr/> <hr/> <hr/> <hr/> <hr/> <hr/> <hr/> <hr/> <hr/>
---

# Science Experiment



**Water is very important for plants to grow but how does the plant use water?**

Do this experiment to show you how water is transported by a plant.

## **What you will need:**

- A stalk of celery with leaves OR a white flower with a stem
- A clear cup or jar
- Water
- Food coloring

## **Instructions:**

- Fill two-thirds of the cup with water and add a few drops of food colouring.
- Place the celery stalk or white flower with stem into the cup.
- Use a felt tip to mark the water line. Observe what happens. You could take a photograph/draw a picture.
- Leave it for an hour and see if anything has happened. Take another photograph/draw a picture.
- Leave it overnight and see what it looks like in the morning. Take another photograph/draw a picture.

What do you think will happen?

### **My Predictions:**

<hr/> <hr/> <hr/> <hr/>
-------------------------

## Diagrams:

Before:

After:

## Results:

What has happened to the celery stick/flower? How has it changed?

---

---

What has happened to the water line?

---

---

Can you explain what has happened?

---

---

---

## Plenary:

Cut horizontally through a celery stem and observe the water transportation vessels called **xylem**. What does it look like? Find out more here:

<https://www.youtube.com/watch?v=ebWlgSoerWA>

<https://www.bbc.co.uk/teach/class-clips-video/science-ks1-ks2-ivys-plant-workshop-how-does-water-get-from-the-roots-to-the-leaves/zdtfjhw>

Remember to send any photographs of your experiments to your teacher 😊

